

Corel DRAWings 2

Spring towel

In this presentation we will show you how easy it is to create your own Spring towel using Corel DRAWings 2.

Materials needed:

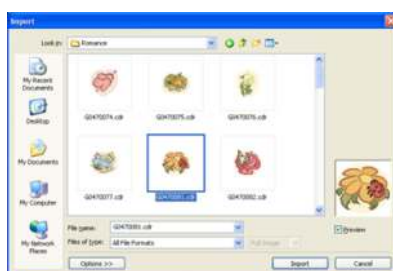
- 5 Gunold threads
- 20 cm² Stabilizer
- 30 X 10 cm Ultra Solvy top stabilizer
- 1 cross-stitch cloth towel
- Corel DRAWings 2



Working with Corel DRAWings 2


The artwork that you will embroider can be a ready-made clipart or a design that you will create from scratch using **Corel DRAWings 2** tools. For our project we will use a combination of both. We will use a ready-made clipart which is included in the clipart library of Corel DRAW 12 (Included in Corel DRAWings 2 package) and a Text Art design that we will create using the Text tools of DRAW tab. In order to convert a vector design to an embroidery design you have to follow the steps below:

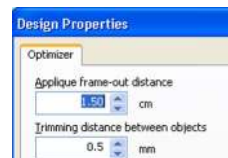
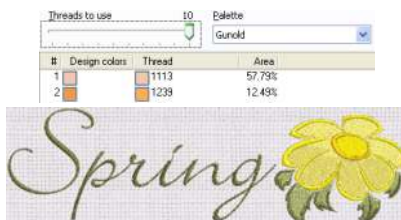
1. Open **Corel DRAWings 2** and from “**Create new**” select “**New Corel Graphic**”.



2. Select the “**Cross-stitch cloth**” fabric from the “**Embroidery Heavy**” section. This is the type of fabric that we will use for embroidering the design that we will create.

3. Insert the **second CD** of Corel DRAW 12 that includes the clipart designs.

4. Click on the import button  from the standard toolbar of Corel DRAWings 2 and browse to “**Clipart\Romance**” folder of the CD and select the **G0470081.cdr**. This design will be a part of the embroidery design that you will create.

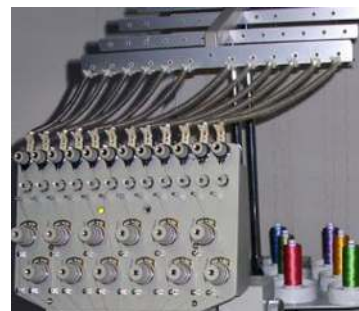
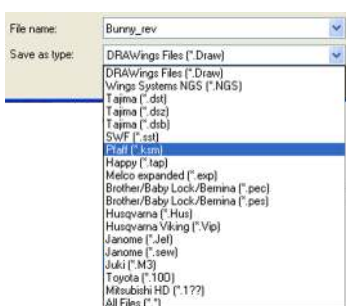
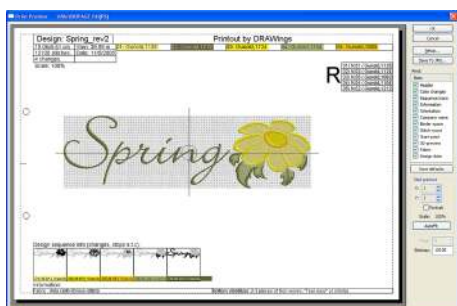


5. In the **DRAW** tab edit the vector design according to the **shape, size** and the **colors** you want it to have. Add the Text Art you want to embroider, using the “**Text**” tool, and convert it to stitches by clicking on the “**stitch**” tab of Corel DRAWings 2.

6. We have embroidered the design with “Gunold” (Sulky) threads. Just click on the “**Edit palette**” tool, in the stitch tab, and change the color “**Palette**” to the one you are using.

7. Set the “**Trimming distance between objects**” to 0,5mm from “**Tools>Optimizer options**” in order to add more thread cuts between objects and for a better embroidery result.

Corel DRAWings 2



8. Make a **Printout** of the embroidery and use it to make the final adjustments on the embroidery machine. The printout gives you valuable information regarding the backing material (stabilizers) you should use.

9. **Save** the design in the embroidery file format that your embroidery machine supports and load it in the embroidery machine.

10. Use the information listed in the **Printout** to put the threads in the respective thread carrier or to know when to change color if you have only one thread carrier.



11. Place the towel in the frame together with the **Ultra solvy stabilizer** on top and an ordinary one under the fabric.

12. When you finish with the adjustments of the machine you can proceed with embroidering the design.



Embroidery on the towel

When you finish embroidering the design you have to clean the design from the stabilizers in order to be ready for use. The **ultra solvy** stabilizer it is water-soluble and will disappear after the first wash of the towel. The towel is now ready for use. You can create your own embroidery designs with Corel DRAWings 2 and sew them on your towels easily and quickly. **Try it! It is so easy to do it.**



Samples were made with KSM-Smart-Embroidery-Generation, IB-Line from KSM GmbH, producer and sales organization of PFAFF embroidery machines. [Learn more...](#)

Samples were made using Sulky rayon embroidery threads from **Gunold® GmbH**. [Learn more...](#)