

Easter pillow

In this presentation we will show you how easy it is to create your own Easter pillow using Corel DRAWings 2.

Materials needed:

1 mid size pillow
9 Gunold threads
20 cm² Stabilizer
30 cm² cotton fabric
Corel DRAWings 2



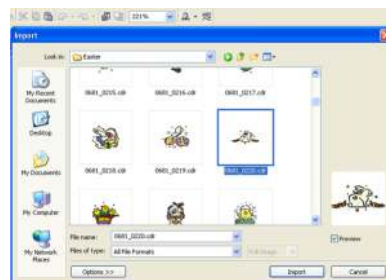
Working with Corel DRAWings 2

The artwork that you will embroider can be a ready-made clipart or a design that you will create from scratch using **Corel DRAWings 2** tools. For our project we will use a ready-made clipart which is included in the clipart library of Corel DRAW 12(Included in Corel DRAWings 2 package). In order to convert a vector design to an embroidery design you have to follow the steps below:

1. Open **Corel DRAWings 2** and from “**Create new**” select “**New Corel Graphic**”.



2. Select the “**Cotton**” fabric from the “**Embroidery normal**” section. This is the type of fabric that we will use for embroidering the design that we will create.



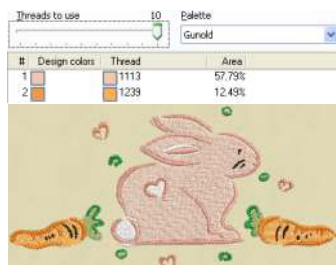
3. Insert the **second CD** of Corel DRAW 12 that includes the clipart designs.



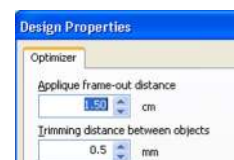
4. Click on the import button from the standard toolbar of Corel DRAWings 2 and browse to “\Clipart\Spec_occ\Easter\” folder of the CD and select the **0681_0220.cdr**. This will be the design that we will embroider on the fabric.



5. In the **DRAW** tab edit the vector design according to the **size** and the **colors** you want it to have and convert it to stitches by clicking on the “**stitch**” tab of Corel DRAWings 2.

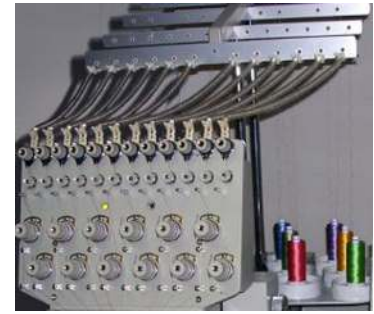
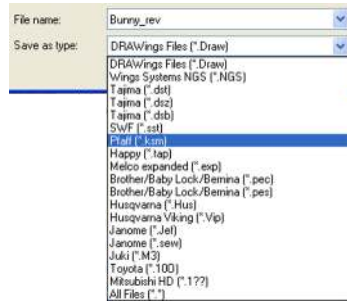
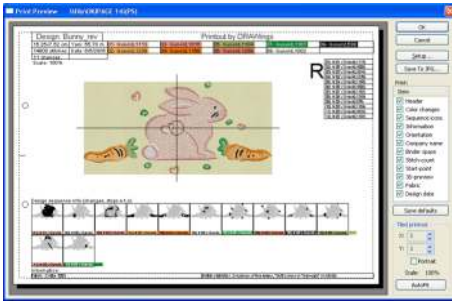


6. We have embroidered the design with “Gunold” (Sulky) threads. Just click on the “**Edit palette**” tool, in the stitch tab, and change the color “**Palette**” to the one you are using.



7. Set the “**Trimming distance between objects**” to 0,5mm from “**Tools>Optimizer options**” in order to add more thread cuts between objects and for a better embroidery result.

Corel DRAWings 2



8. Make a **Printout** of the embroidery and use it to make the final adjustments on the embroidery machine. The printout gives you valuable information regarding the backing material (stabilizers) you should use.

9. **Save** the design in the embroidery file format that your embroidery machine supports and load it in the embroidery machine.

10. Use the information listed in the **Printout** to put the threads in the respective thread carrier or to know when to change color if you have only one thread carrier.



11. **Cut** a square fabric at the size of your pillow, place the **stabilizer** under the fabric and insert it in the frame.

12. When you finish with the adjustments of the machine you can proceed with embroidering the design.



Create the pillow

You can use a ready made square pillow-case and sew the embroidered fabric on it or just embroider directly on the **pillow-case**. In our case, we have **sewed** a pillow-case using the embroidered fabric as the front side. You can see the result on the right. We have created a perfect Easter pillow easily and quickly. **Try it! It is so easy to do it.**



Samples were made with KSM-Smart-Embroidery-Generation, IB-Line from KSM GmbH, producer and sales organization of PFAFF embroidery machines. [Learn more...](#)

Samples were made using Sulky rayon embroidery threads from **Gunold® GmbH**. [Learn more...](#)