

Birthday Card

With **Corel DRAWings 2** you can release your creativity and create items that combine embroidery with other materials. In this project we will show you step-by-step how to create a unique birthday card for you and your dear ones.

Materials needed:

- 1 mid size pillow
- 13 Gunold threads
- 20 cm² Stabilizer
- 30 cm² cotton fabric
- Corel DRAWings 2



Working with Corel DRAWings 2

The artwork that you will embroider can be a ready-made clipart or a design that you will create from scratch using **Corel DRAWings 2** tools. For our project we will use a ready-made clipart which is included in the clipart library of Corel DRAW 12 (included in Corel DRAWings 2 package). In order to convert a vector design to an embroidery design you have to follow the steps below:

1. Open Corel DRAWings 2 and from “**Create new**” select “**New Corel Graphic**”.



2. Select the “**Cotton**” fabric from the “**Embroidery normal**” section. This is the type of fabric that we will use for embroidering the design that we will create.



5. In the **DRAW** tab, edit the vector design to create the size you want and add a **Text Art** under the design. In order to convert it to stitches we click on the “**stitch**” tab of Corel DRAWings 2.



3. Insert the second CD of Corel DRAW 12 that includes the clipart designs.

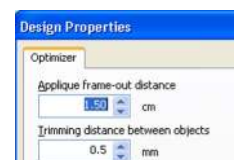
#	Design colors	Thread	Area
1		1113	57.79%
2		1238	12.48%



6. We have embroidered the design with “Gunold” (Sulky) threads. Just click on the “**Edit palette**” tool, in the stitch tab, and change the color “**Palette**” to the one you are using.

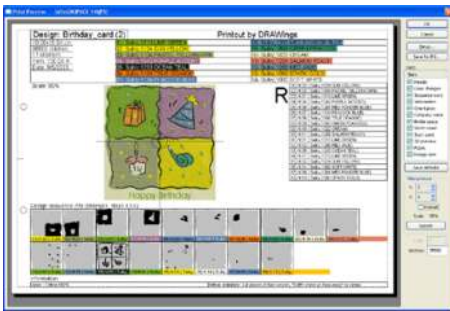


4. Click on the import button from the standard toolbar of Corel DRAWINGS 2 and browse to “**\Clipart\Spec_occ\Birthday**” folder of the CD and select the **G0473112.cdr**. This will be the design that we will embroider on the fabric.



7. Set the “**Trimming distance between objects**” to 0,5mm from “**Tools>Optimizer options**” in order to add more thread cuts between objects and for a better embroidery result.

Corel DRAWings 2



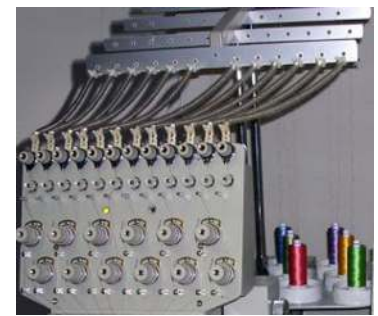
8. Make a **printout** of the embroidery and use it to make the final adjustments on the embroidery machine. The printout gives you valuable information regarding the backing material (stabilizers) you should use.



9. **Save** the design in the embroidery file format that your embroidery machine supports and load it in the embroidery machine.

11. **Cut** a square fabric bigger than your card frame, place the stabilizer under the fabric and insert it in the frame.

12. When you finish with the adjustments of the machine you can proceed with embroidering the design.



10. Use the information listed in the **Printout** to put the threads in the respective thread carrier or to know when to change color, if you have only one thread carrier.



Create the Birthday Card

When you finish embroidering the design you can continue by creating the birthday card frame to which you will attach your embroidery design. Use a **cardboard** to create a 3-fold frame. Make a window on the middle part and glue the embroidery design you have created. Fold the left part of the cardboard to cover the back of the design and give the final shape of the birthday card. **Use embellishments** to decorate your card and give it a fun touch. To make it easier you can use a ready-made **aperture card** to fit your embroidery. You can see the result on the right. We have created a lovely **Birthday Card** easily and quickly. **Try it! It is so easy to do it.**



Samples were made with KSM-Smart-Embroidery-Generation, IB-Line from KSM GmbH, producer and sales organization of PFAFF embroidery machines. [Learn more...](#)

Samples were made using Sulky rayon embroidery threads from **Gunold® GmbH**. [Learn more...](#)